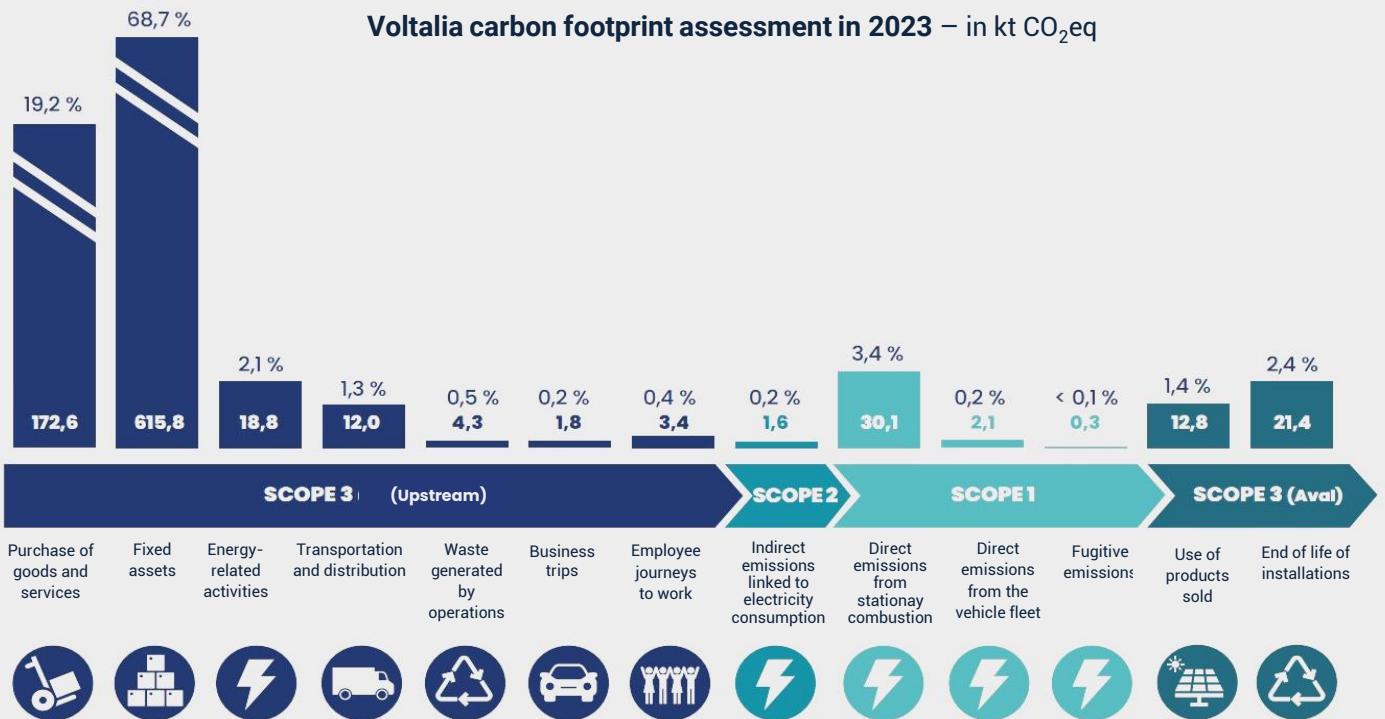


# Voltalia's carbon footprint assessment calculation

Voltalia reduces the environmental impact of its activities  
environnemental of its activities

**In 2023, Voltalia's greenhouse gas emissions represented the equivalent of 897 kilotons of CO<sub>2</sub>, among which 32 kilotons of CO<sub>2</sub> (4%) of direct emissions (Scope 1).**

Voltalia carbon footprint assessment in 2023 – in kt CO<sub>2</sub>eq



In 2022, Voltalia has internalized the calculation of the Carbon Footprint of its activities throughout its value chain (Scope 1, 2 and 3), which is now be carried out annually by its teams. Developing this skill and the associated measurement tools will make it possible to better monitor emissions, identify the most significant items and implement relevant corrective measures to reduce the climate impact of our activities throughout the value chain of our power plants.

The vast majority of Voltalia's emissions correspond to Scope 3 and particularly to the purchase of large equipment such as wind turbines or solar panels.

## Methodology for calculating the carbon footprint:

Voltalia used the Bilan Carbone® method developed by the French Environment and Energy Management Agency (ADEME). This method accounts for the greenhouse gas (GHG) emissions generated by all the physical processes necessary for the company's existence.

